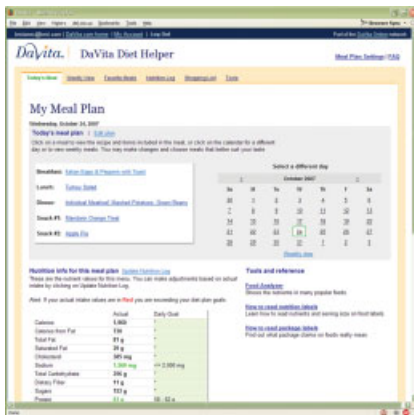




▼ The **FistulaFinder** from CreatiVasc Medical is designed to help locate vascular access points on arteriovenous fistulas. To use the FistulaFinder, the clinician depresses the upper compression ridge above the general area where the fistula is located. This pressure causes the fistula to maximally dilate, elevating it so it can be visually located. The cannulation point appears as a "target" between the two lower prongs (or "feet") of the device. These lower prongs are designed for the clinician to use a wider longer segment, which will prevent overuse of an access point. No longer will the clinician be forced to only feel for the hard-to-detect subcutaneous turbulence; now the fistula site can be seen, easily detected, and utilized using this one-time-use device.

For more information, visit www.creativasc.com.



▼ DaVita has launched the **DaVita Diet Helper** to make kidney-friendly meals easy to plan, prepare, and track. This all-purpose online meal planning tool helps dialysis patients, their caregivers,

renal dietitians, and nephrologists plan proper nutrition based on 24 unique kidney-diet prescriptions. The tool also provides tasty, easy-to-prepare recipes, complete weekly meal plans, online grocery lists, and nutrition trackers that can be printed and shared with doctors and dietitians, making management of the renal diet more effective and improving patients' nutritional intake and quality of care.

For more information, visit www.davita.com/diethelper.



▼ The **Nova StatSensor Creatinine**, a handheld creatinine monitoring system from Nova Biomedical enables rapid assessment of renal function by finger prick capillary blood sampling at the point of care. The monitor also interfaces with hospital and laboratory information systems. Comprehensive instrument manager software provides management, control, and regulatory compliance, and allows the system to be completely customized to the needs of each department within a hospital.

For more information, visit www.novabio.com

▼ BioTrends Research Group has released the **4th Annual Nephrology TreatmentTrends Publication**, a syndicated report offering compre-

hensive insight into the management of renal anemia and bone and mineral metabolism in CKD. The report is based on responses to an online survey, completed by 305 clinical nephrologists in the U.S. during December 2007.

The research group provides syndicated and custom market research to pharmaceutical manufacturers competing in clinically evolving, specialty pharmaceutical markets.

For information on BioTrends publications visit www.bio-trends.com.



▼ Renal Solutions has introduced a hemodialysis blood pump, the **Pulsar** blood pump made with Lexan HPM resins. The pump features SABIC Innovative Plastics' advanced hemocompatibility polycarbonate resin, and helps prevent buildup of thrombus on the pump's walls that could potentially interfere with the effectiveness of treatments.

Renal Solutions worked closely with SABIC Innovative Plastics to identify a material that met the mechanical and physical needs for the blood pump's hemodynamic filling design while offering enhanced blood-contact properties. Lexan HPM resin's improved performance vs. standard polycarbonate resin allows the Pulsar pump to benefit from reduced platelet and fibrinogen binding characteristics, as well as reduced leukocyte and C3a protein activation, resulting in reductions in overall clotting.

For more information, visit www.renalsolutionsinc.com.